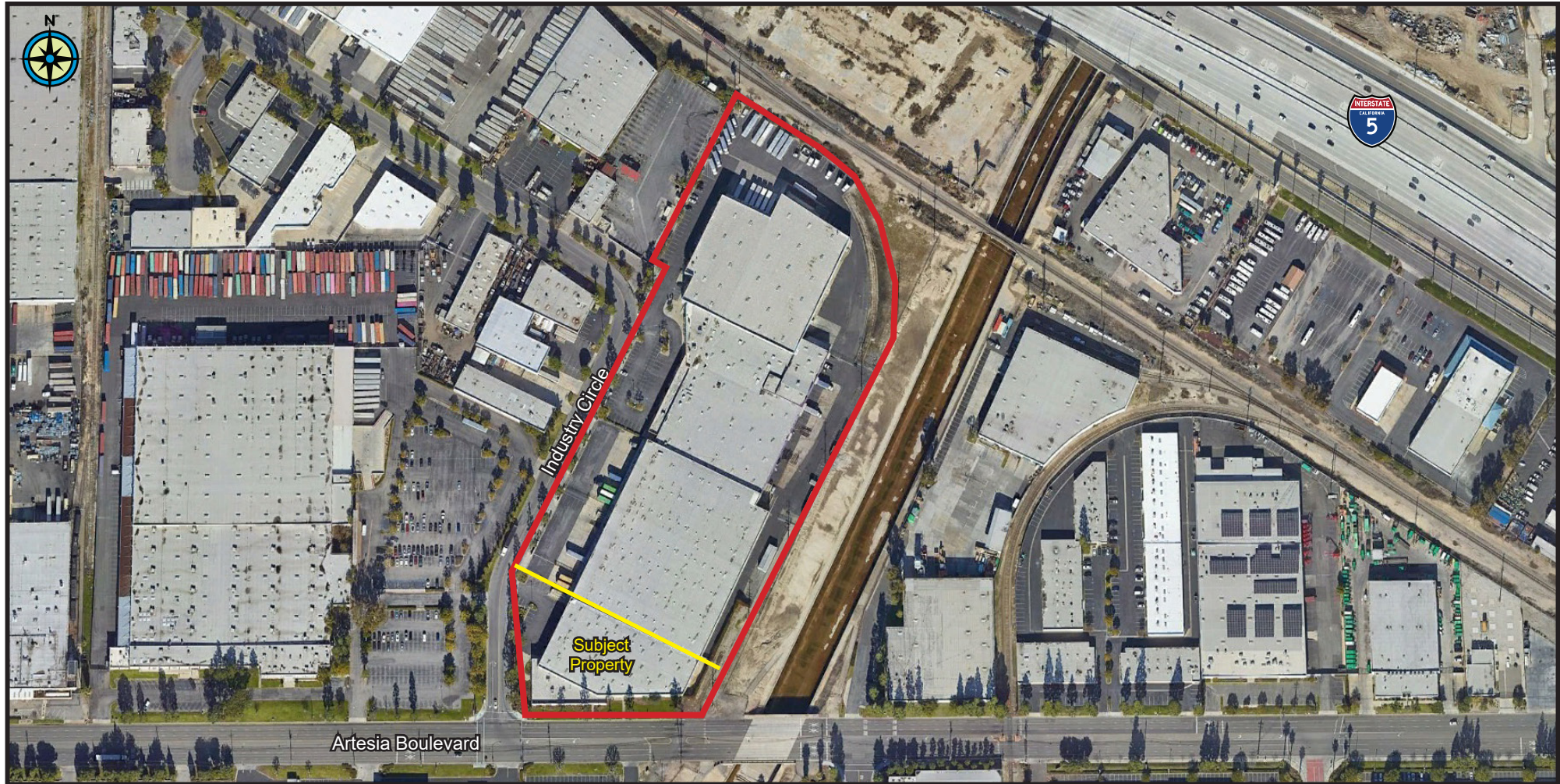


FOR LEASE  
± 45,246 Square Feet

NEWMARK

14741 & 14765 INDUSTRY CIRCLE, LA MIRADA, CALIFORNIA



For additional information,  
please contact:

Steve Sprenger  
Vice Chairman  
714.264.3993  
[steve.sprenger@nmrk.com](mailto:steve.sprenger@nmrk.com)  
CA RE Lic. # 01202806

Troy Williams  
Senior Managing Director  
714.551.9918  
[troy.williams@nmrk.com](mailto:troy.williams@nmrk.com)  
CA RE Lic. # 01053444



NEWMARK | 18401 VON KARMAN AVENUE, SUITE 150 | IRVINE, CA 92612 | CA LICENSE # 00812184

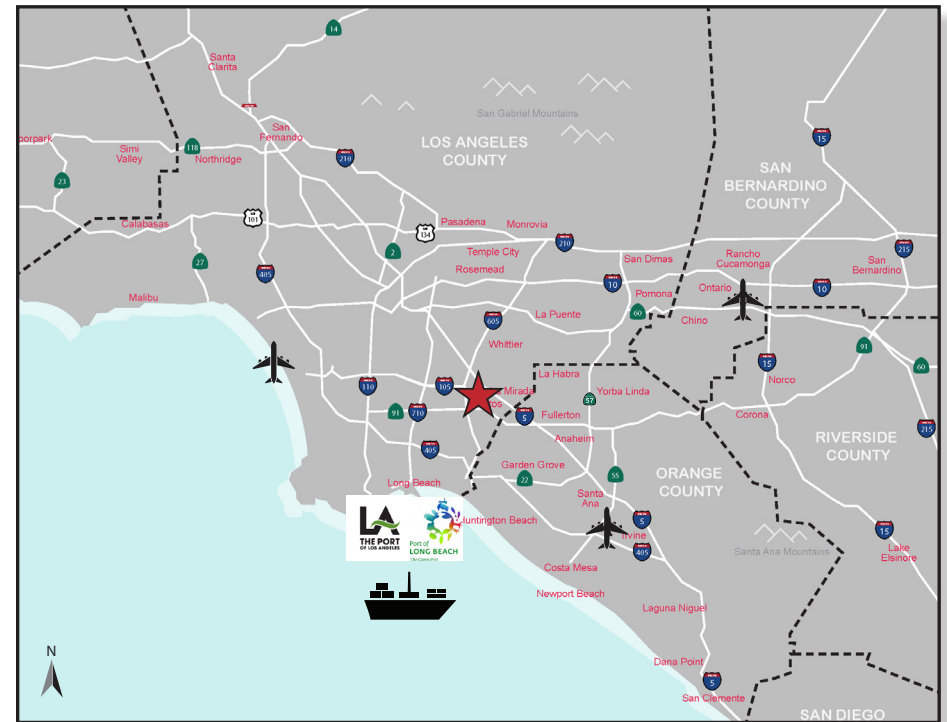
The information contained herein was obtained from third parties, and it has not been independently verified by the real estate brokers. Buyer/Tenants should have the experts of their choice inspect the property and verify all information. Real estate brokers are not qualified to act as or select experts with respect to legal, tax, environment, building construction, soils-drainage or other such matters.

# FOR LEASE

## ± 45,246 Square Feet

# NEWMARK

14741 & 14765 INDUSTRY CIRCLE, LA MIRADA, CALIFORNIA



## FEATURES

- True Dock High Distribution Facility
- Six (6) Dock Positions with 6 Pit Levelers
- 1 Ground Level Ramp Possible
- ± 24' Minimum Warehouse Clearance
- Fire Sprinkler System: Currently Being Upgraded to ESFR
- Electrical Power - 200 Amp, 277/480V, 3 Phase, 4 Wire
- ± 6,189 Square Foot 2-Level Corporate Offices
- Immediate Access to the I-5, I-605 and 91 Freeways
- Within Twenty-Five (25) Miles to the Ports of Long Beach & Los Angeles

NEWMARK | 18401 VON KARMAN AVENUE, SUITE 150 | IRVINE, CA 92612 | CA LICENSE # 00812184

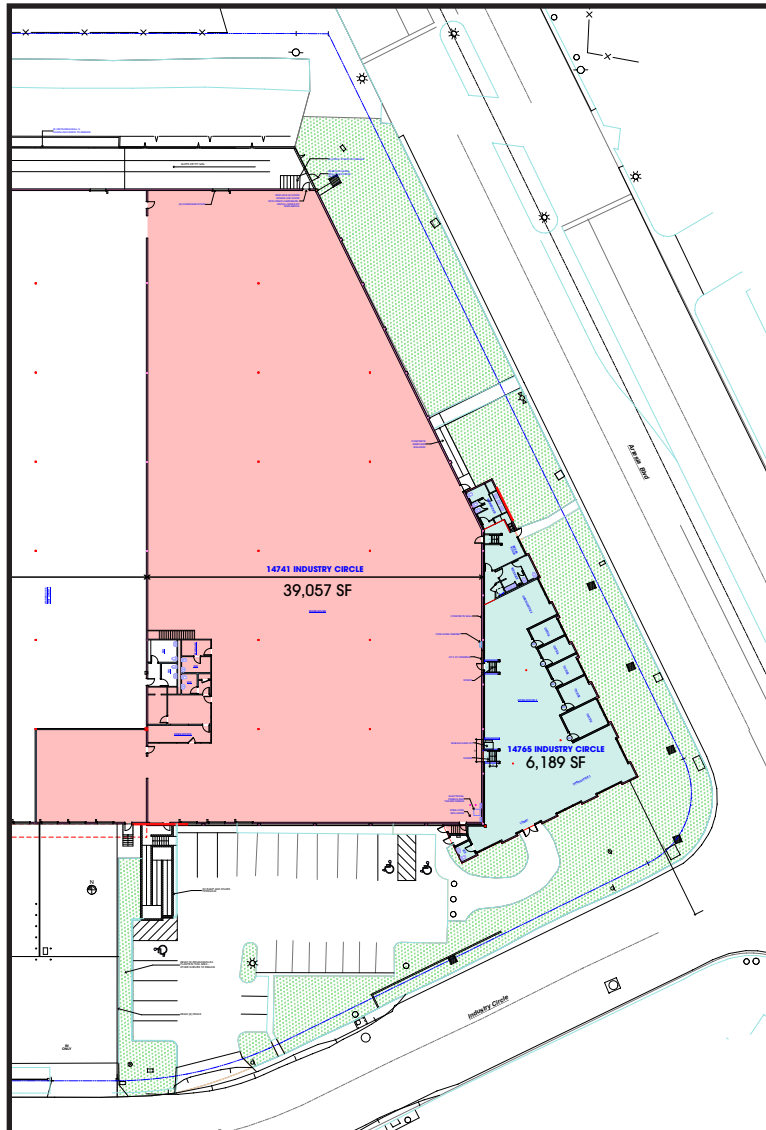
The information contained herein was obtained from third parties, and it has not been independently verified by the real estate brokers. Buyer/Tenants should have the experts of their choice inspect the property and verify all information. Real estate brokers are not qualified to act as or select experts with respect to legal, tax, environment, building construction, soils-drainage or other such matters.

FOR LEASE  
± 45,246 Square Feet

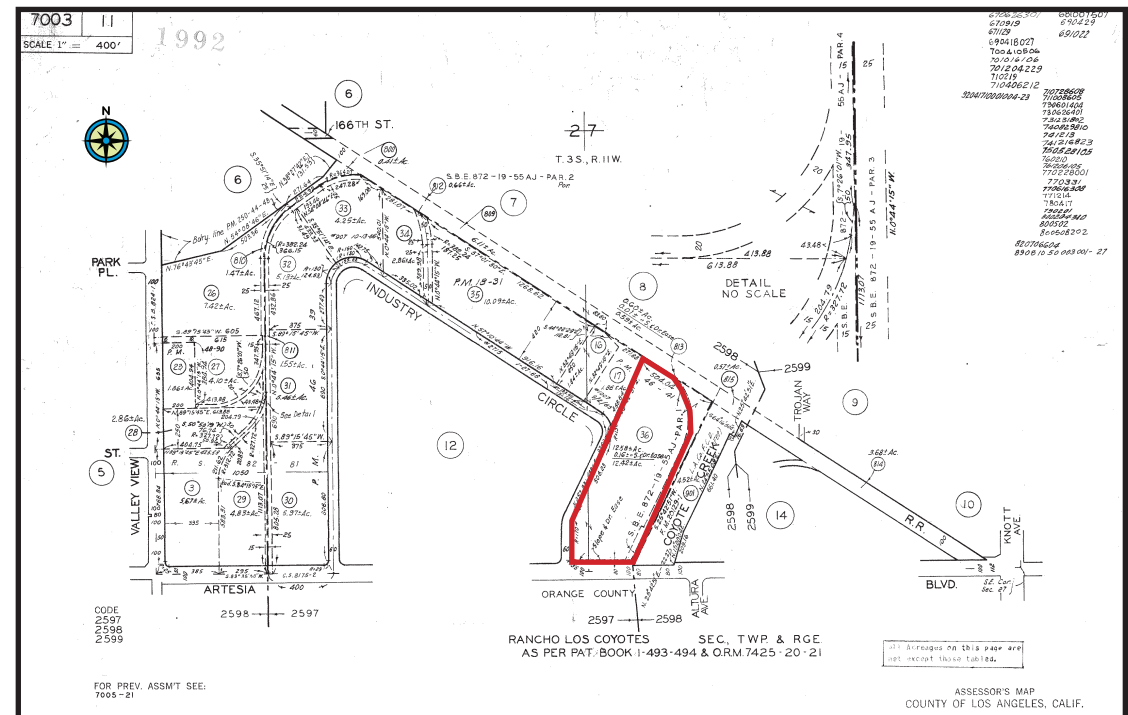
NEWMARK

14741 & 14765 INDUSTRY CIRCLE, LA MIRADA, CALIFORNIA

## SITE PLAN



## PARCEL MAP



Steve Sprenger  
Vice Chairman  
714.264.3993  
[steve.sprenger@nmrk.com](mailto:steve.sprenger@nmrk.com)  
CA RE Lic. # 01202806

Troy Williams  
Senior Managing Director  
714.551.9918  
[troy.williams@nmrk.com](mailto:troy.williams@nmrk.com)  
CA RE Lic. # 01053444

NEWMARK | 18401 VON KARMAN AVENUE, SUITE 150 | IRVINE, CA 92612 | CA LICENSE # 00812184

The information contained herein was obtained from third parties, and it has not been independently verified by the real estate brokers. Buyer/Tenants should have the experts of their choice inspect the property and verify all information. Real estate brokers are not qualified to act as or select experts with respect to legal, tax, environment, building construction, soils-drainage or other such matters.